

## Han K 32-55-F-C

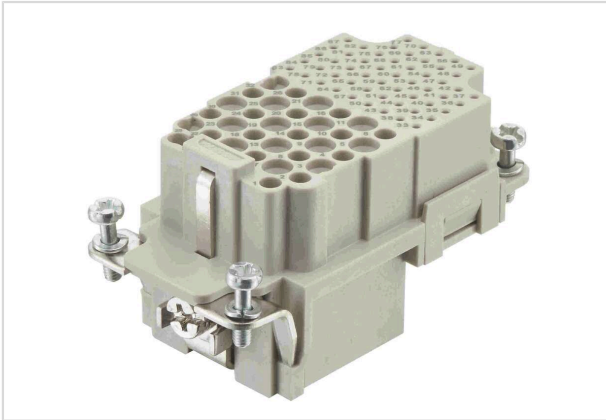


Image is for illustration purposes only. Please refer to product description.

Part number	09 38 087 3101
Specification	Han K 32-55-F-C
HARTING eCatalogue	<a href="https://b2b.harting.com/09380873101">https://b2b.harting.com/09380873101</a>

### Identification

Category	Inserts
Series	Han-Com <sup>®</sup>
Identification	Han <sup>®</sup> K 32/55

### Version

Termination method	Crimp termination
Gender	Female
Size	10 B
Number of contacts	87
Number of signal contacts	55
Number of power contacts	32
PE contact	Yes
Details	Please order crimp contacts separately. 32x Han D <sup>®</sup> 55x D-Sub

### Technical characteristics

Conductor cross-section	0.09 ... 0.52 mm <sup>2</sup> Signal 0.14 ... 2.5 mm <sup>2</sup> Power
Rated current (signal)	4 A
Rated voltage (signal)	50 V
Rated impulse voltage (signal)	0.8 kV
Pollution degree (signal)	2
Rated current (power)	10 A



Pushing Performance  
Since 1945

## Technical characteristics

Rated voltage (power)	250 V
Rated impulse voltage (power)	4 kV
Pollution degree (power)	2
Rated voltage acc. to UL	600 V Power contacts 30 V Signal contacts
Insulation resistance	$>10^{10} \Omega$
Limiting temperature	-40 ... +125 °C
Mating cycles	$\geq 500$

## Material properties

Material (insert)	Polycarbonate (PC)
Colour (insert)	RAL 7032 (pebble grey)
Material flammability class acc. to UL 94	V-0
RoHS	compliant
ELV status	compliant
China RoHS	e
REACH Annex XVII substances	Not contained
REACH ANNEX XIV substances	Not contained
REACH SVHC substances	Not contained
California Proposition 65 substances	Yes
California Proposition 65 substances	Lead Nickel
Fire protection on railway vehicles	EN 45545-2 (2020-08)
Requirement set with Hazard Levels	R22 (HL 1-3) R23 (HL 1-3)

## Specifications and approvals

Specifications	IEC 60664-1 IEC 61984
UL / CSA	UL 1977 ECBT2.E235076 CSA-C22.2 No. 182.3 ECBT8.E235076

## Commercial data

Packaging size	1
Net weight	47.5 g
Country of origin	China



**Pushing Performance**  
Since 1945

## Commercial data

European customs tariff number	85366990
GTIN	5713140186507
eCl@ss	27440205 Contact insert for industrial connectors

---